



Engagement, Involvement & Participation

Michelle Forder

Lead Engagement Officer for Halton Children's Trust



**CYP
VSF**

Halton Children and Young People's Voluntary Sector Forum brings together organisations working with children and young people.

INVOLVE

INVOLVE acts as a critical friend to Halton's Children's Trust on participation. The group can also act in an advisory capacity on participation, advising on how best to involve parents, children and young people in decision making processes.

HFV

Parents and carers engagement and the focus on today's presentation

Background

- Halton Family voice is a forum which links into Halton Children's Trust to represent Halton Parents and carers 'VOICE' on a wide range of agendas and topics.
- The forum was previously known as Halton Parents and Carers Forum and was established in 2005. The forum changed to **Halton Family Voice** in 2012, as agreed by Children's Trust and parents.

Halton Family Voice

- Halton Family Voice aims to INVOLVE parents and carers in the planning, development and delivery of services for children and young people and families.
- Membership is open to all residents living in Halton who have a child 0 – 19 years of age.
- The membership consists of representatives from many of the local parent or carer groups in order to gain a true representation of Halton Parents.

Halton Family Voice Network

Child and Family Poverty Strategy Group	EHaS - Early Help and Support and work/task sub groups	Anti Bullying - Events and boards	Children's Trust	Commissioning team/ Board	Workforce Development	Health and Wellbeing Board	HIAP
Michelle Dyson and Laura Berry	Kath Campbell and Jane Dunn	Nicola Moriarty	Cleo Pollard	Michelle Forder	Michelle Forder	TBC	Nina Houstley
Employment and Learning Skills	Children & YP Families Board	Community Practitioners forum	JSNA (Health)	Provider Network (disability)	Youth Opportunities Board	Participation Sub Group	SEN Reform
Cleo Pollard	Cleo Pollard	Michelle Forder	Michelle Forder	Joanne Hughes	Michelle Forder	Julie Sumner	Jane Dunn, Nicola Moriarty, Julie Sumner, Kath Campbell

Halton Family Voice

Halton Lodge Parent Voice Angela McManus	Windmill Hill Voice Group Lindsay McGregor
Halton Brook Parents Voice Angela McManus	BrookVale Parents Voice Lindsay McGregor
Tuesday Tots Parents Group Bethesda Church	Woodside Primary Parents coffee AM Cathy Murray
Heath Church Parents Group Heather Staniland	Runcorn Children's Centres advisory Board

Parent Partnership Sharon Spruce	Parent Participation & Halton Carers Centre Joanne Hughes
CRI Ashley House Gill Simpson	PACT Jane Dunn
HAFS Jenni Flanagan	HASCAS Vicki Crawford
CHAPS Jo Garner	Teen Parent Group Carla Mc Sherry

Kingsway Parents Voice Rachel Fielding	Ditton & Upton Parents voice Nickki Adams
Warrington Road Parents Voice Rachel Fielding	Banbino's Hale Bank Eve and Laura
Cindy Loroma St John's WoW Club Greenway Rd	Foundry Parents Group
Hope Corner Parents coffee morning	Widnes Children's Centres Advisory Board

- The Group itself meets once a month and welcomes voluntary members from all parents or people with parenting responsibilities within Halton

Parents/carers can be involved...

- Through the monthly forum
- Evening catch up sessions
- Social Media
- Email and mail updates
- Through local parents groups
- Newsletter
- Children's Trust Web page
- Events (Party in the Park, Runcorn Carnival)
- Training for parents and carers

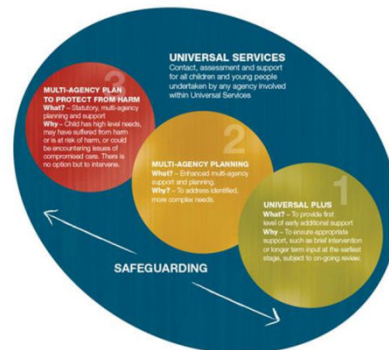
(coffee mornings, parents evenings, community groups).

Training

- Children's Trust Induction Training
- Prevent Illegal Money Lending advocate training
- Halton Parent Partnership workshops
- Safeguarding introduction
- Representative training

INVOLVED in

- EHAS task and finish groups
- Levels of need re-design
- CCG Governing body meetings
- Urgent Care review
- CAMHS consultation
- Toy Library consultation/focus group
- Community Parents
- CCG – Have your say
- SEND reform
- CQC consultation
- INVOLVE (participation advisory Board)
- Children's Centre OFSTED inspections



Parent Led

You and your family are invited to

Our Healthy Halton Event

Halton Children's Centres

On the
25th July
Halton
Select Stadium
1 - 3:30pm

Halton Children's Trust
Working together to make the difference

Halton Family Voice
"WE'RE ALL IN THIS TOGETHER"

Interactive Health Workshops ~ Prize Giving
Fruit Salads ~ Dance Workshop ~ Information Stands



Good practice example

- Parents from Halebank raised the issue around baby checks/weighing being inaccessible due to poor transport from the area.
- After discussions with Public Health commissioners and Bridgewater
- There is now baby checks/weighing available once a month at Halebank community center, this will co-inside with the community's parents coffee morning.

Future plans

- Parent inspectors
- Parents awards
- Further training opportunities
- Building further partnership working through the involvement of parents at an early stage



Any Questions?